



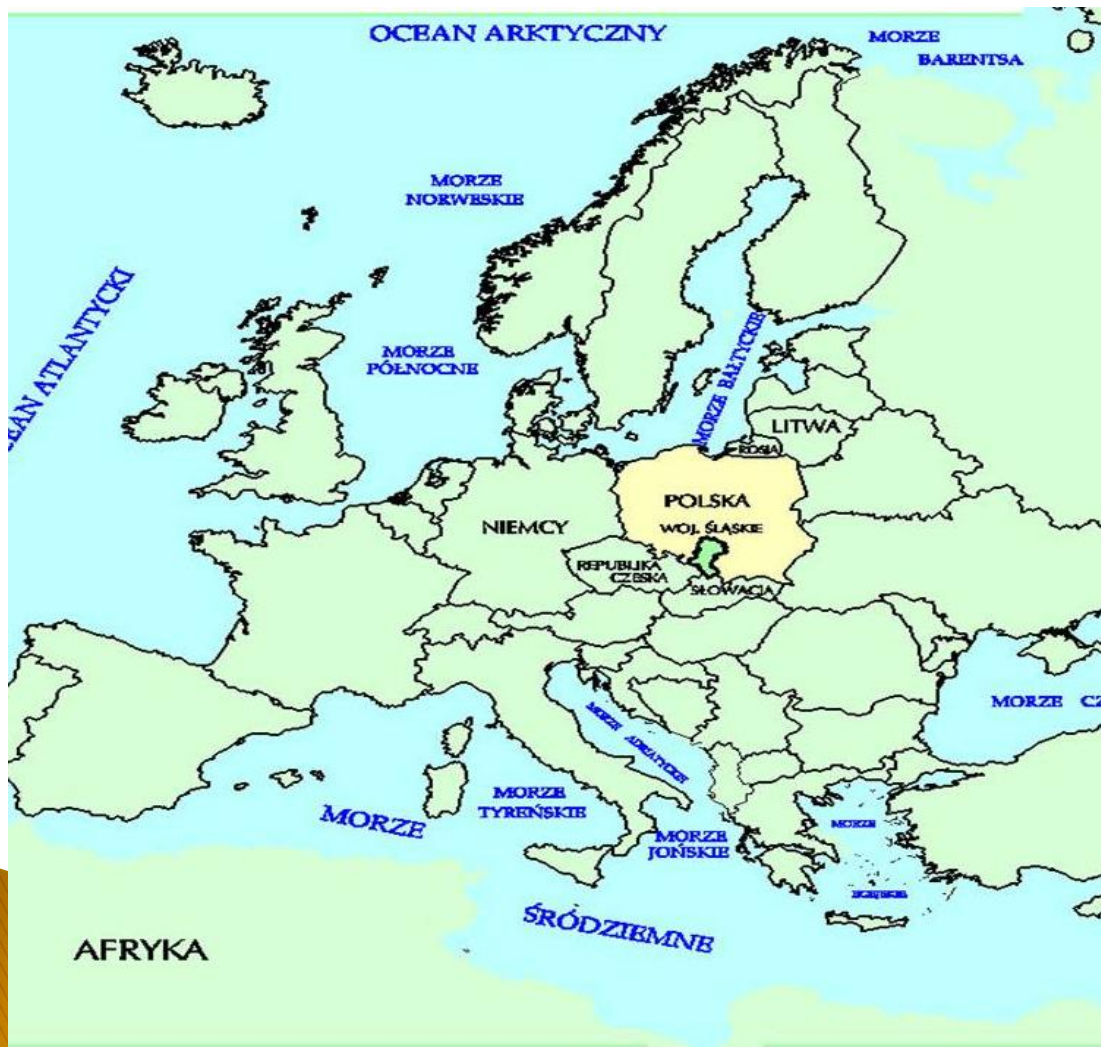
# SILESIA REGION



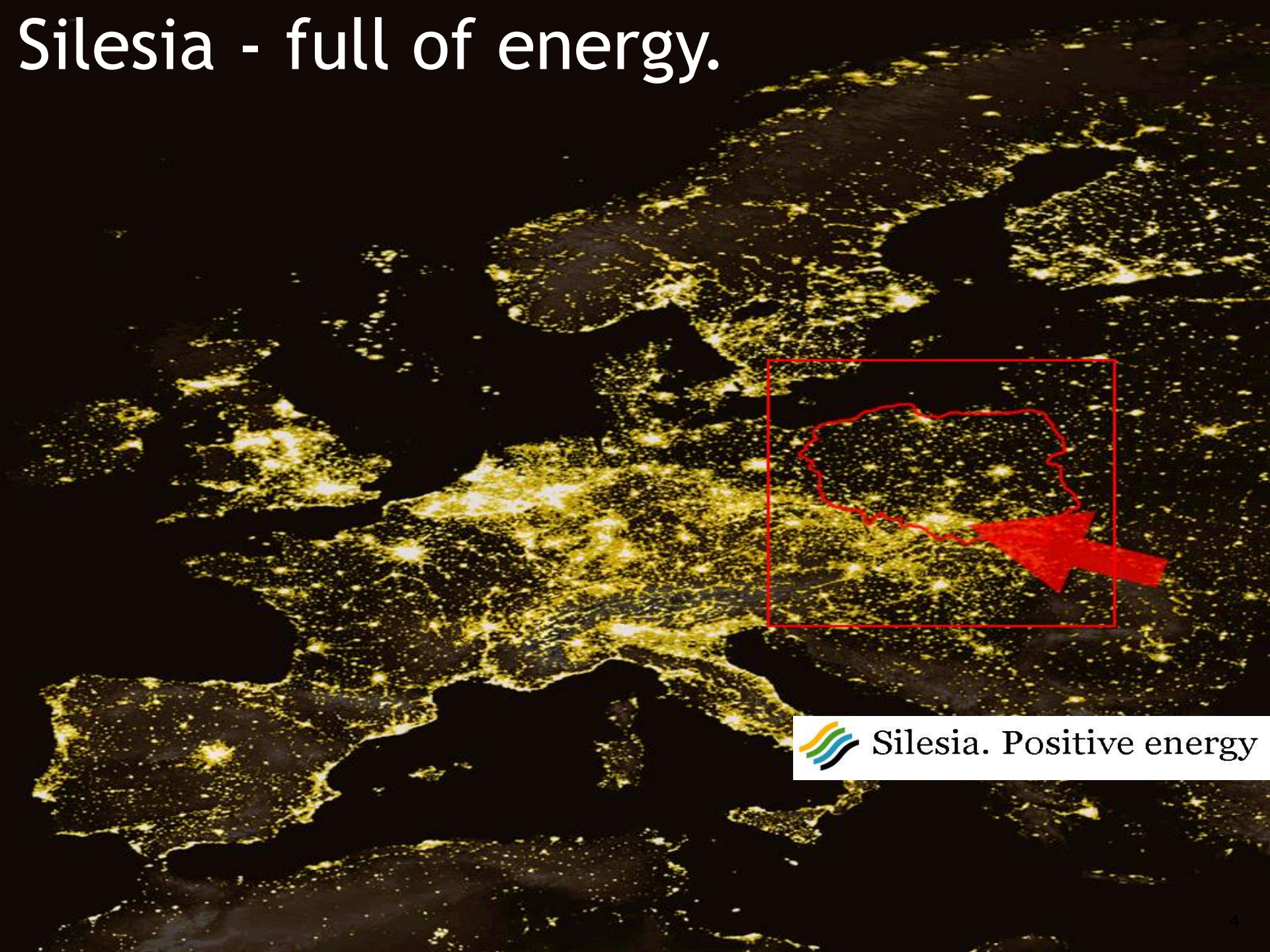
# AGENDA

1. Basic data about Silesia
2. Why is Silesia an attractive region?
  - ✚ Human Resources – labour market & education
  - ✚ Infrastructure
  - ✚ Silesian economy
3. Who has trusted us?
4. Not only work...
5. A few words about us...

# SILESIA ON THE MAP



# Silesia - full of energy.



Silesia. Positive energy

# DISTANCES

## by car in Europe...

- Prague 320 km
- Bratislava 380 km
- Vienna 430 km
- Lvov 410 km
- Budapest 460 km
- Berlin 590 km

## by car in Poland...

- Wroclaw 200 km
- Warsaw 297 km
- Balice Airport 70 km
- Pyrzowice Airport 30 km



# BASIC STATISTICAL DATA

Total area: 12 331 km<sup>2</sup>

**3,9%** of country

Population: 4 685 775

**12,2%** of country

in Silesian Agglomeration:

**61%** of region

People:

in urban areas: **78,5 %**

in working-age: **65,4%**

density: **379** people per km<sup>2</sup>



# FOREIGN PARTNERS



1. Nord - Pas de Calais [France]
2. North-Rhine Westphalia [Germany]
3. The Lvov District [Ukraine]
4. The Moravian-Silesian Region [Czech Republic]
5. The Chernivtzi District [Ukraine]
6. Wales [Great Britain]
7. The Zilina Self-Governing Region [Slovakia]
8. Styria [Austria]
9. Asturias [Spain]
10. Western Gotaland [Sweden]
11. The Bas-Rhin Department [France]
12. The Suceava District [Romania]
13. The Borsod-Abauj-Zemplen [Hungary]
14. Wallony [Belgium]
15. Donetsk District [Ukraine]

# SILESIAN AGGLOMERATION

It is a group of cities without borders, in the heart of Silesian Voivodeship.

- ◆ strong economic activity;
- ◆ one of the most urban and industrial areas in the Middle Europe;
- ◆ surface: 18% of region surface (1200 sq km)
- ◆ population: almost **3 mln people**  
(61% of region human resources)
  - Warsaw: 1,640 mln inhabitants
  - Poznan: 0,580 mln inhabitants
  - Crakow: 0,740 mln inhabitantsaverage density: **1 900** people / sq km
- ◆ economy: 50% of GDP of the Silesian Voivodeship and 7% of GDP of Poland most urban and industrial areas in the Middle Europe.





# NUMBER OF CITIES OF OVER 100,000 INHABITANTS

Country	Number of cities of over 100 000 inhabitants
Poland	<b>40</b>
Czech Republic	<b>5</b>
Slovakia	<b>2</b>
Hungary	<b>9</b>



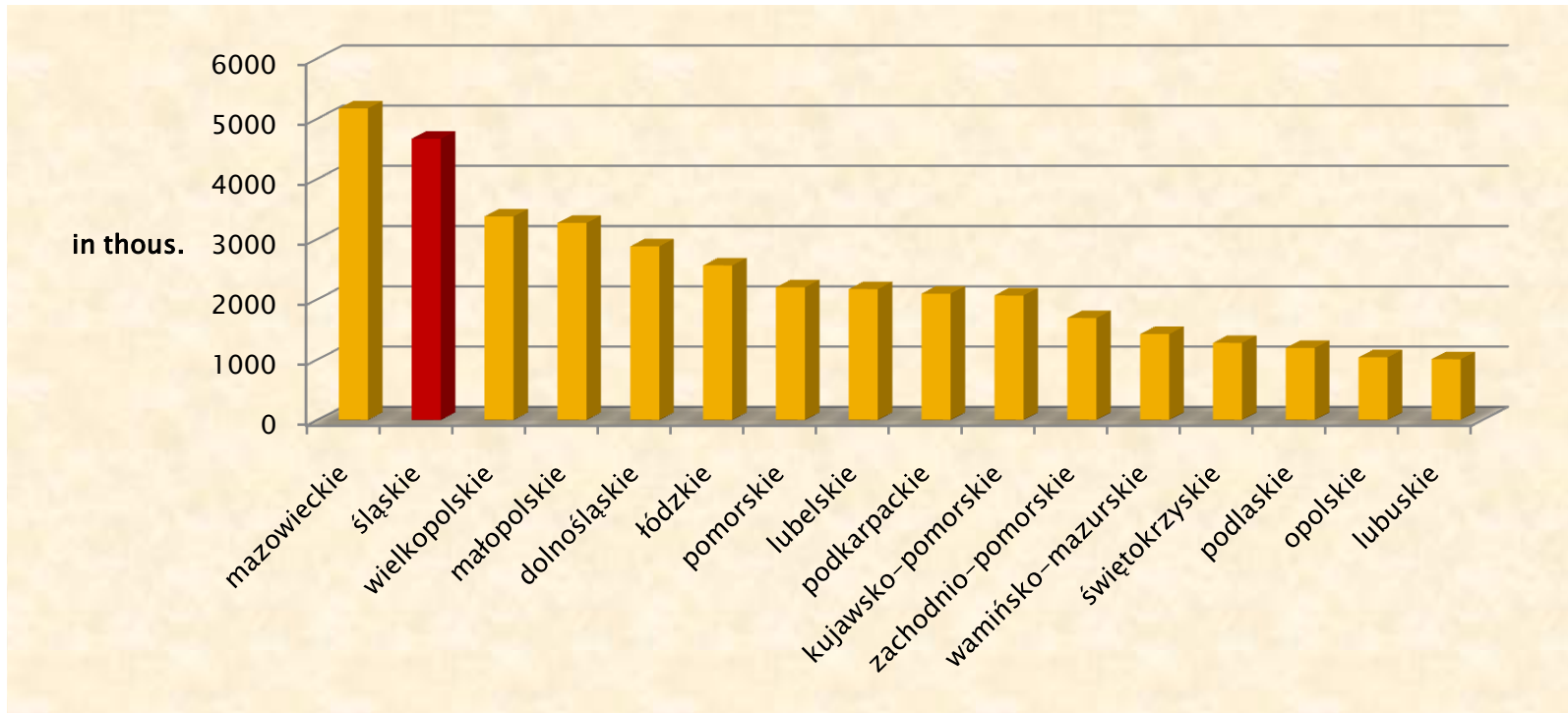
# POPULATION

9 million people live within the radius of 100 km from Katowice = huge outlet and workforce resources



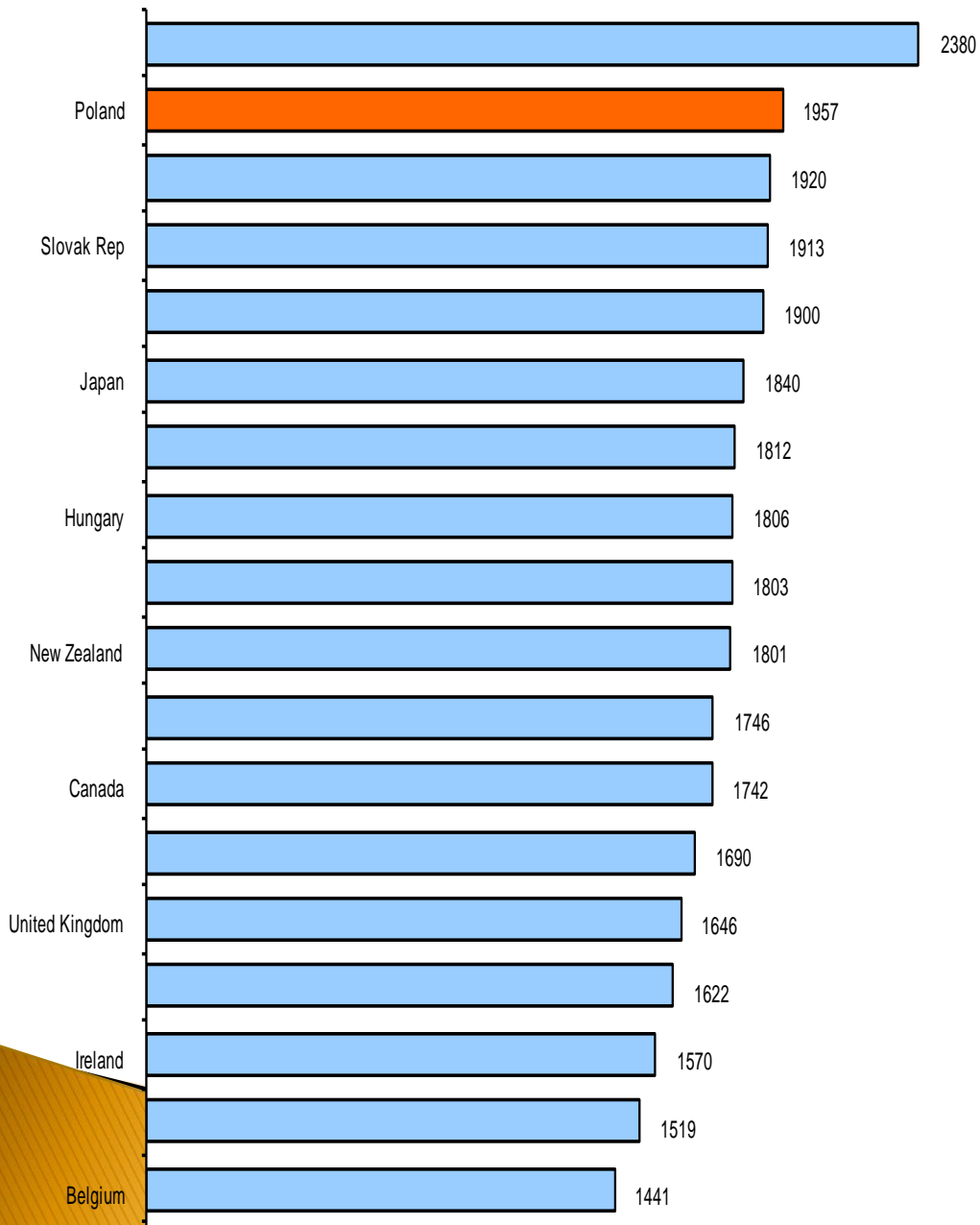


# POPULATION



Source: Poland's regions, Central Statistical Office, Warsaw 2007

# POLES ARE HARDWORKING AND LOYAL



- Poles are the hardest working nation after Korea
- In 2004 each Polish employee worked on average 1957 hours
- Compared to Spain and Germany it is almost 600 hours more

# WORKFORCE IN SILESIA



- ◆ huge demographic potential with strong culture and ethos of work
- ◆ huge concentration of highly qualified individuals within the workforce
- ◆ well prepared personnel [technical, medical, economical]
- ◆ constant increase of education level among citizens

# DIDACTIC AND RESEARCH CENTRES

**200 000** students at private and public universities

**12,1%** of R&D potential of country

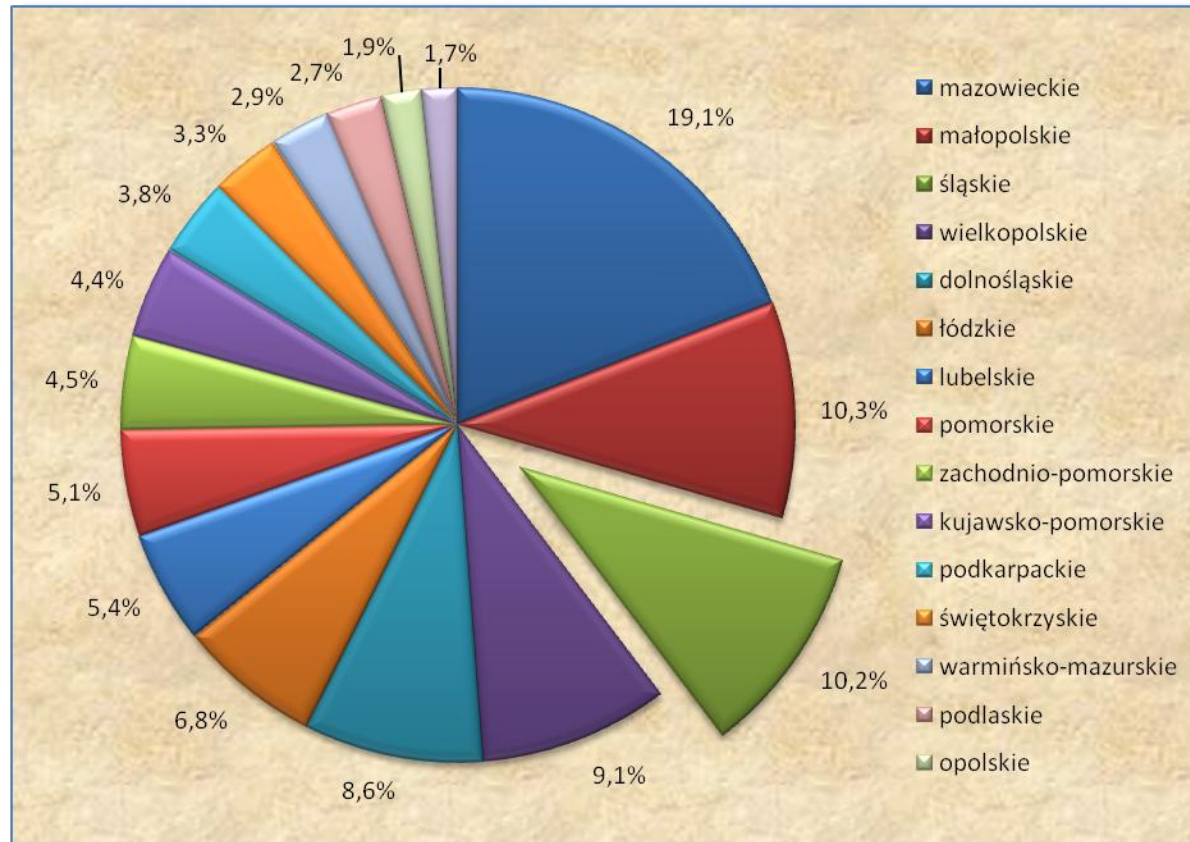


Medical University of Silesia – chancellor's office

University of Silesia – Faculty of Law and Administration building



# STUDENTS IN SILESIA



Source: Statistical Yearbook of the Regions, Central Statistical Office, Warsaw, 2006



# HIGHER EDUCATION INSTITUTIONS

## 44 higher education institutions

1 university, 3 technical universities, 15 academies of economics, 2 teacher education schools, 1 medical academy, 16 higher vocational schools.

203 238 students = **10,2%** of total number of students in Poland.

43 127 graduates in academic year 2005/2006 = **10,9%** of all graduates in Poland.

32% of graduates in region are from academies of economics

26% of graduates in region are from technical universities

22% of graduates in region are from University of Silesia

## 9 431 academic teachers

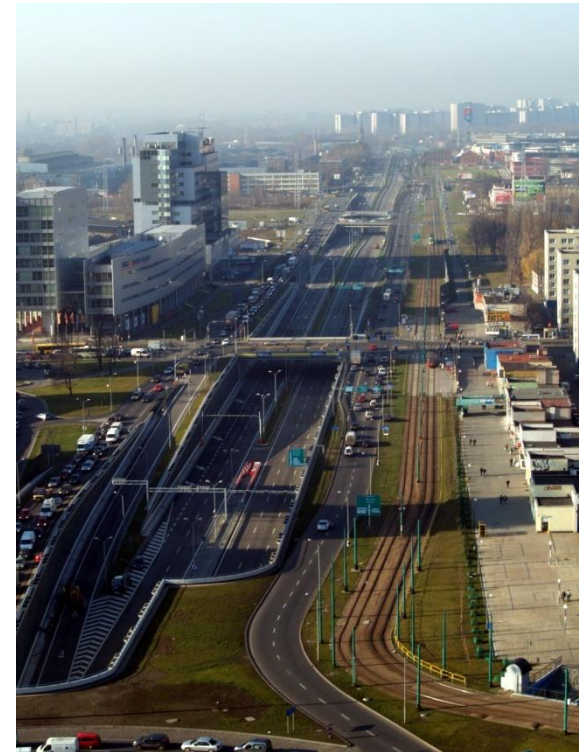
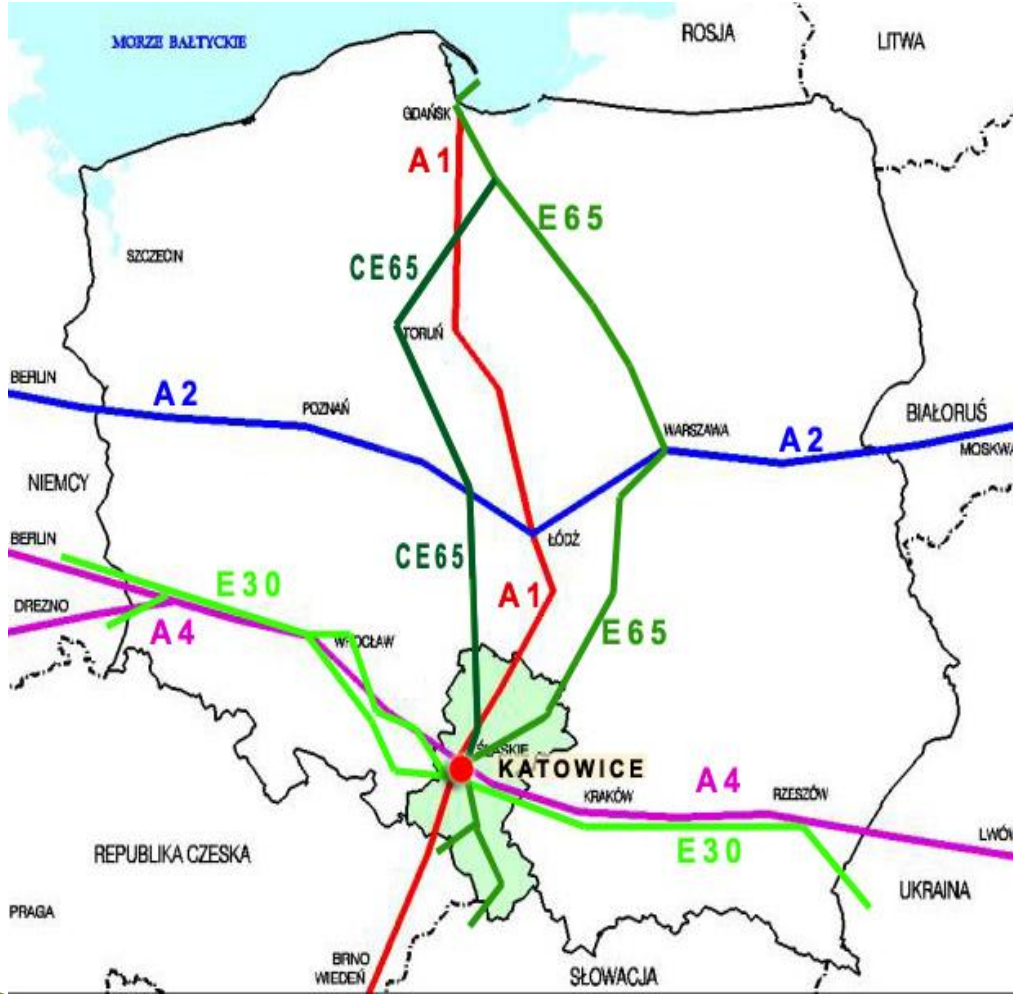


Medical University of Silesia





# ROADS



# AIRPORT

**International Airport KATOWICE – PYRZOWICE (KTW) is about 30 km to the north from Katowice. Passengers from the whole southern Poland and**



**even from the Czech Republic and Slovakia use from the airport services. This airport is one of the key elements of transport infrastructure in Silesia region.**

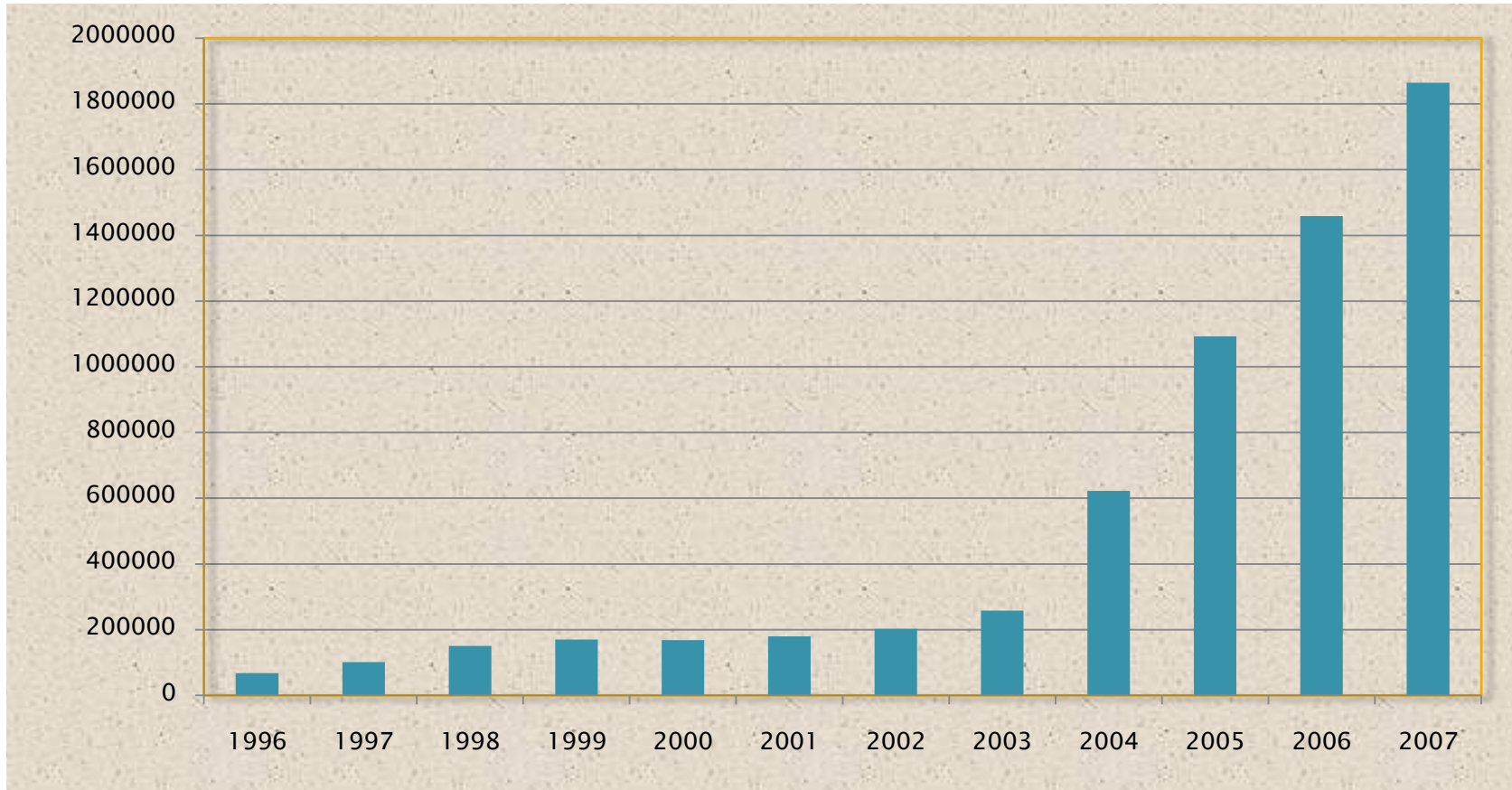


# *PASSENGERS IN POLAND*



Source: [www.pasazer.com](http://www.pasazer.com), 2007

# *PASSENGERS IN KATOWICE*



Source: GTL, 2007

# *DIRECTIONS*





# PASSENGERS GROWTH RATE



Łódź	63,6 %
Wrocław	49,3 %
Poznań	40,8 %
Gdańsk	37,8 %
Katowice	38,7 %
Bydgoszcz	35,1 %
Rzeszów	34,5 %
Szczecin	32,9 %
Kraków	30,7 %
Warszawa	14,4 %
Zielona Góra	-15,8 %



Source: www.pasazer.com, 2007

# RAILWAY

Participation in realization of **50%** domestic transport;

- main junctions: Tarnowskie Gory, Katowice, Gliwice, Czestochowa
- *Central Trunk Line* – fast transport from Bielsko–Biala, through Katowice to Warsaw;
- *Central Water Main* – connection between Katowice and Gdansk.





Międzynarodowy  
Port Lotniczy  
"Katowice"  
w Pyrzowicach



**30 km - PYRZOWICE**

**100 km - OSTRAWA**

**75 km - CRACOW**

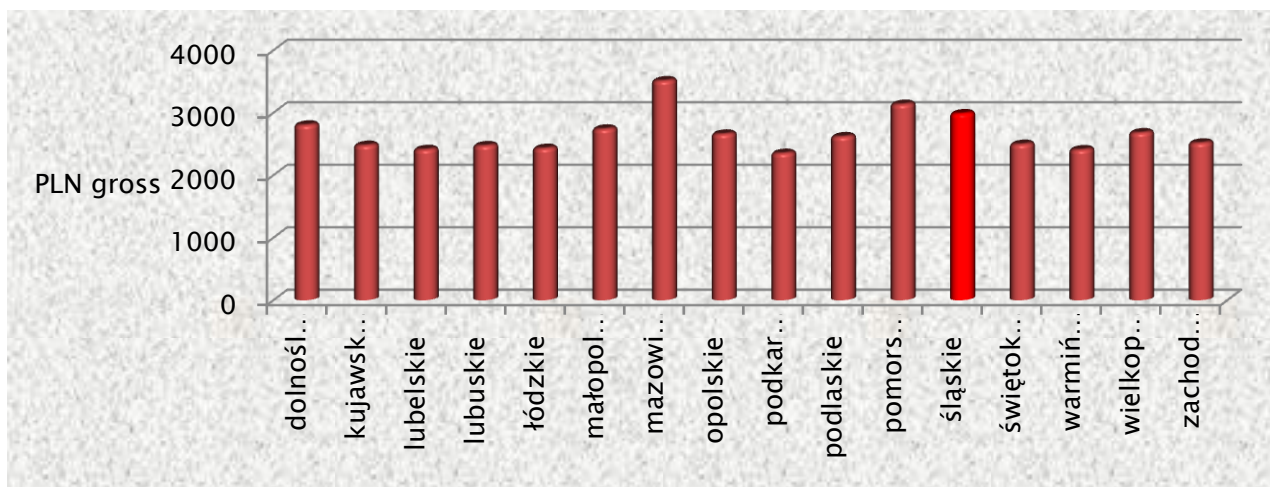
Source: City Council of Katowice





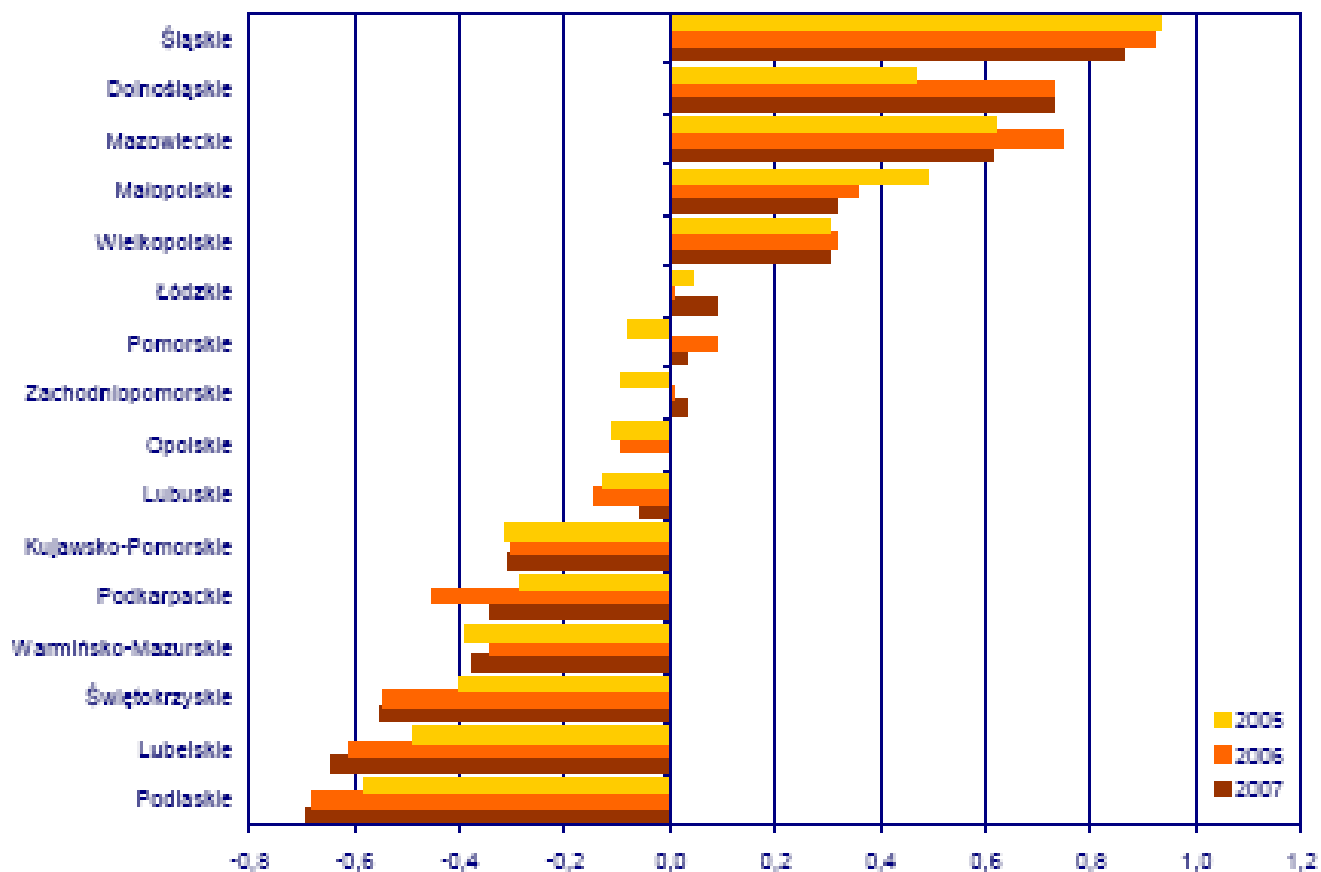
# DATA ABOUT SILESIA ECONOMY

- Average monthly payment in industrial sector: **3 188,6 PLN** (about 903 €)



- Unemployment rate: **9,3%** (XI.2007)
- Entities of national economy: **427 413** (XII.2007)
  - ★ state enterprises: **84**
  - ★ commercial law companies: **28 184**
  - ★ private persons' companies: **322 859**

# THE BEST ATTRACTIVENESS



Source: The Gdansk Institute for Market Economics, 2007



# ATTRACTIVENESS production activity in 2007



Source: The Gdansk Institute for Market Economics, 2007



# ATTRACTIVENESS service activity in 2005–2007



Source: The Gdansk Institute for Market Economics, 2007

# KATOWICE SPECIAL ECONOMIC ZONE

KSEZ is a leader among the other special economic zones (area and invested capital). Companies have possibility

1. to use the state aid in terms of an income tax relief up to 40% of the incurred investment cost

or

2. to use the state aid in terms of an income tax relief up to 40% of 2-year labor costs for new jobs created

- small enterprises are granted up to 60%

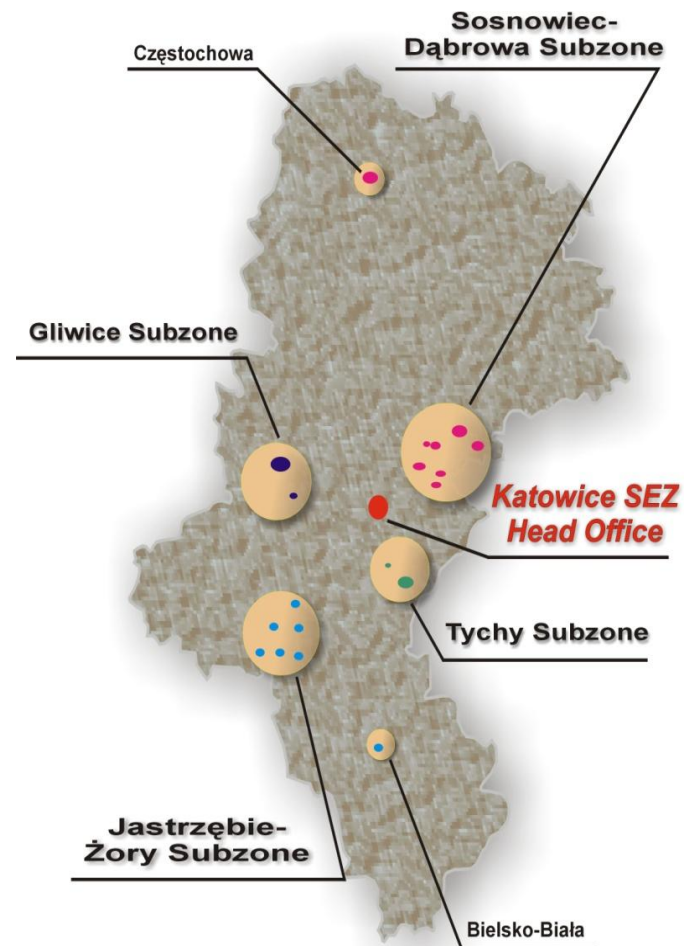
- medium enterprises are granted up to 50%

3. real estate tax relief (decided by the local authorities).



■ [www.ksse.com.pl](http://www.ksse.com.pl)

■ [ksse@ksse.com.pl](mailto:ksse@ksse.com.pl)



# FOREIGN INVESTORS examples



*ROSA, Tychy*



*GM Opel, Gliwice*



*BRE Bank, Katowice*



*NGK Ceramics, Gliwice*

# CULTURE



Culture institutions:

24 theatres and music institutions;

61 cinemas;

47 museums;

28 galleries;

371 houses and centers of culture;

840 libraries.

# TOURISM



The Pauline Fathers' Monastery on Jasna Góra in Częstochowa

Rock climbing in Krakowsko-Częstochowska Upland



Castles & palaces

Skiers on the slopes - Beskidy Mountains





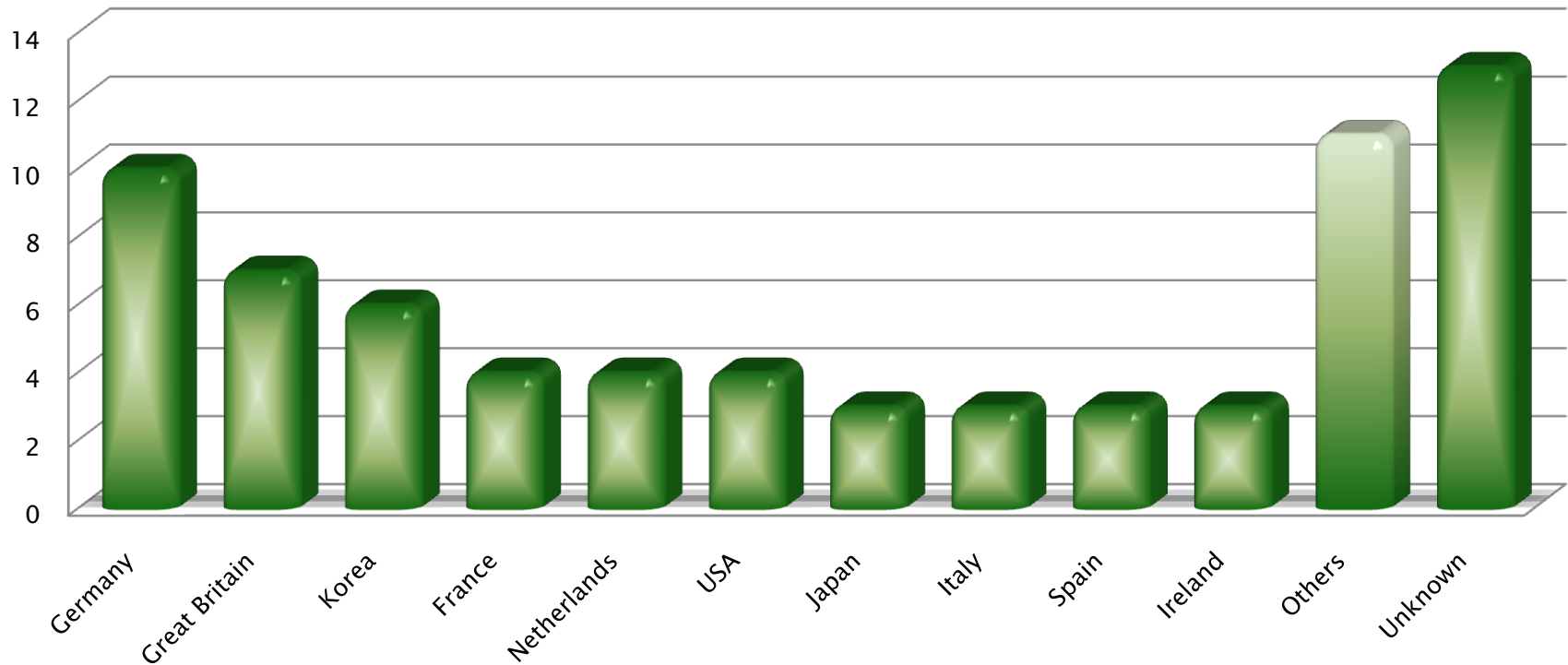
# SILESIA INVESTOR ASSISTANCE CENTER

- ▶ Creating and current updating the investment offers located on the area of Silesian Voivodeship;
- ▶ Statistic data collection about the Silesia Region;
- ▶ Foreign investors' service in the region;
- ▶ Collaboration with the Polish Information and Foreign Investment Agency;
- ▶ Promoting of regional investment attractiveness home and abroad:
  - brochures, leaflets, gadgets;
  - participation in international investment fairs.
  - [www.invest.visitsilesia.eu](http://www.invest.visitsilesia.eu)



# PROJECTS IN 2007

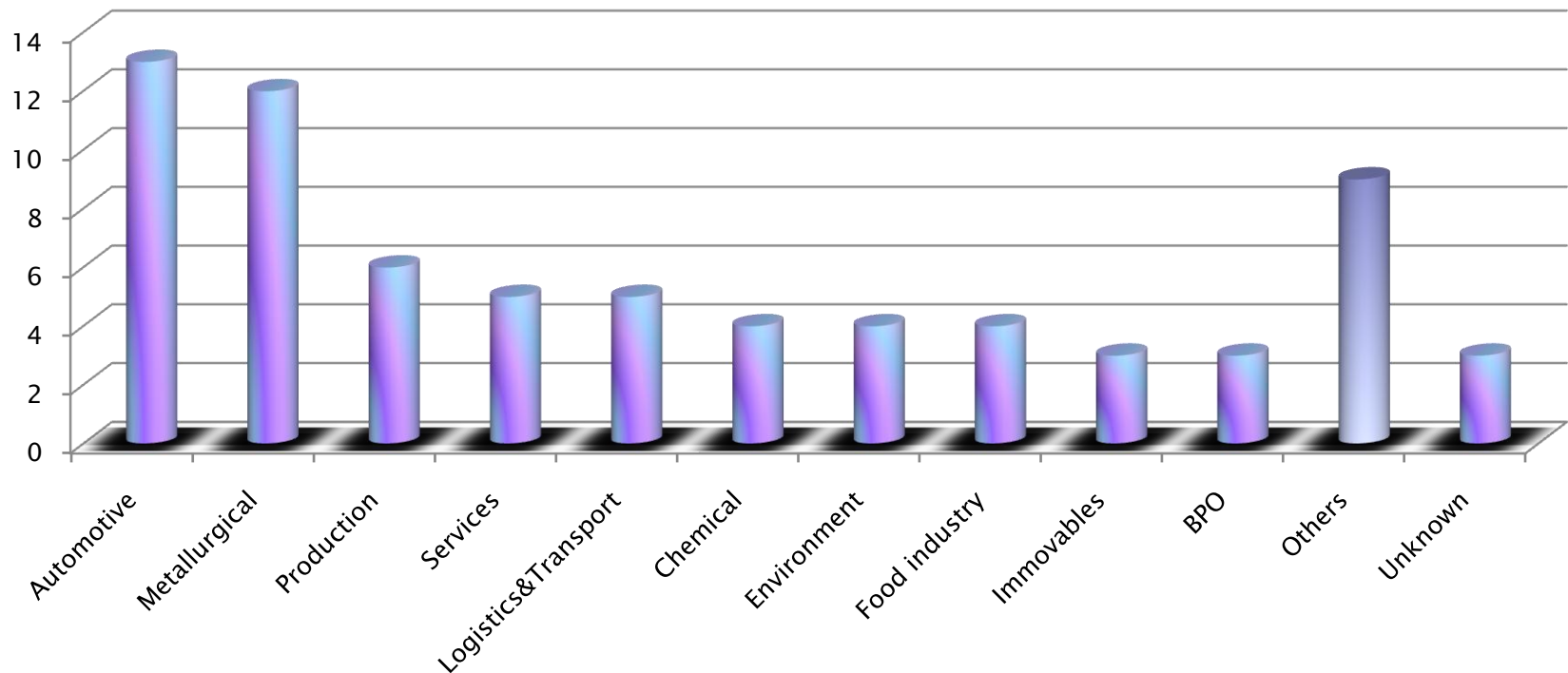
## countries



Others: Austria, Belgium (2), Denmark, Finland, India, Poland (2), Switzerland (2), Taiwan

# PROJECTS IN 2007

## sectors



Others: aerial, electronic, energetic, engineering industry, IT (2), pharmaceutical, technological parks (2), textile



# VISITS IN 2007



France



Spain



Belgium



USA (3)



Netherlands (2)



Germany (2)



Taiwan

# THANK YOU FOR ATTENTION

**MARSHAL OFFICE OF THE SILESIAN VOIVODESHIP**

*46 Ligonja St., Katowice, Poland*

*tel.: +48 32 207 84 77, fax: +48 32 256 32 44*

*[www.invest.visitsilesia.eu](http://www.invest.visitsilesia.eu)*

